

RSC200 Dampening Material Kit Installation Guide

Congratulations! You are now on your way to unlocking the potential in your speakers. We have provided everything you need to improve the sound of your RSC200 loudspeaker.

Please inspect the contents of your kit for the following: items:

ALL BLOCKS SHOULD BE LABELED

- | | |
|-------------|-------------|
| 1. 2 pieces | 4. 1 piece |
| 2. 2 pieces | 5. 2 pieces |
| 3. 2 pieces | 6. 4 pieces |

A few tips...

1. Installation will be much easier if you de-solder the woofer, tweeter & binding post. The Allen screws that hold these in are either 3mm or 1/8" depending on time of production.
2. If you are upgrading your crossover networks with Skiing Ninja networks remove the stock crossover networks before you scrape down the cabinet.
3. When removing the existing dampening material, use a knife or blade to scrape the remaining glue from the cabinet walls. If you have a paint scraper that will work the best or a heat gun to loosen the glue and a putty knife also works well. Vacuum and/or wipe the sides off before starting the installation.
4. Save a scrap of the removed dampening material to use to cover the crossover after you have re-installed everything.
5. If you are installing an upgraded crossover from Skiing Ninja, follow the instructions for installing the new crossover boards before continuing with this installation. See diagram 1.2 of the following page for correct placement of your new crossover network boards. After your new boards are installed you are ready to continue installing the NoRez.
6. Before you take off the backing on any piece, do a dry run of all the pieces to see how they fit. Due to manufacture variations some trimming may need to be done. A strong pair of scissors or a box cutter works well.
7. Cut the sections out of the #5 pieces for the back wall. We place the #5's in after we have put in the floor pieces for a dry run and use the open binding post hole to draw where to cut out. Sometimes replicating this cut on the other 2 #5 pieces will work for the top but the port may not be in the same place all the time. It will get you close though.
8. The adhesive on the NoRez is pressure sensitive so press firmly all over the piece.
9. Reconnect the wiring after all the NoRez has been attached.

Unlock the Potential in Your Loudspeakers

Continues on page two...



SKIING NINJA

3449 Polk Circle West
Wellington, CO 80549
E-mail: sales@skiingninja.com

RSC200 Dampening Material Kit Installation Guide

Continued from page one ...

Installation:

Top of cabinet:

#3 left side

#4 middle section (notch corners for braces)

#3 right side

Bottom of cabinet:

#2 left side front

#5 left side (flush with tube)

#2 right side front

#5 right side (flush with tube)

Back of cabinet:

#6 left side top justified (cut hole for port)

#6 left bottom justified (cut hole for port)

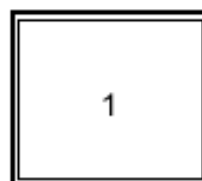
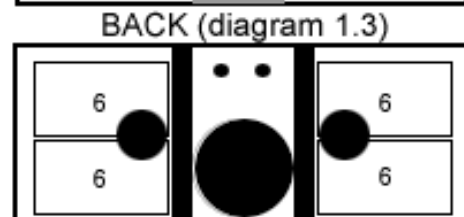
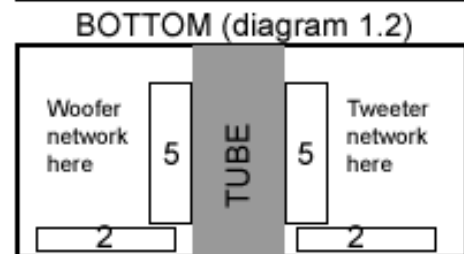
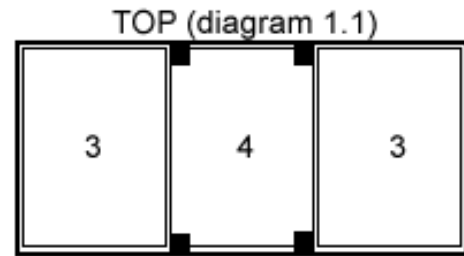
#6 right side top justified (cut hole for port)

#6 right bottom justified (cut hole for port)

Sides of cabinet:

#1 left side of cabinet (centered)

#1 right side of cabinet (centered)



SIDES
(diagram 1.4)

Unlock the Potential in Your Loudspeakers



SKIING NINJA

3449 Polk Circle West

Wellington, CO 80549

E-mail: sales@skiingninja.com